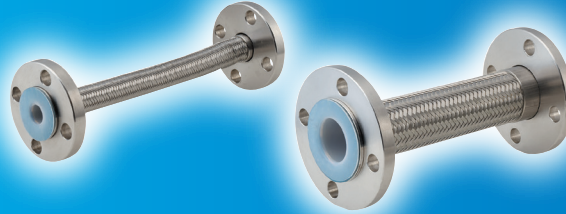


Fluoropolymer flexible joint Corrugated type

POLIFLEX-T

Fluoropolymer corrugated flexible hose is excellent in elasticity and flexibility.



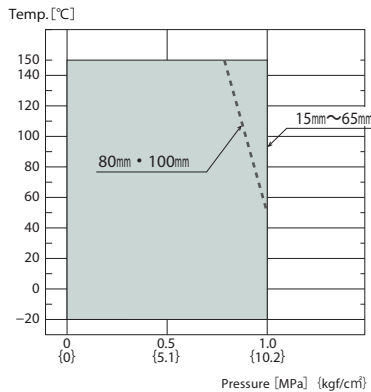
Make-to-order products

Feature

Flexibility

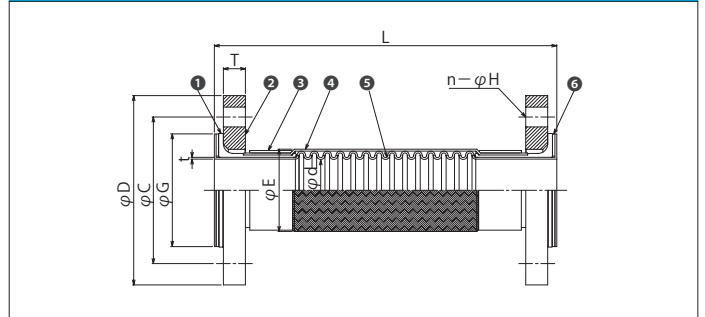
Corrugated (bellows type) design is excellent in flexibility and reciprocating resilience.

Operating Conditions and Performance



● Use after confirmation that the maximum operation pressure and maximum service temperature are within the operation range.

Structure



No.	Parts	Material	No.	Parts	Material
①	Wrap joint	SUS304	④	Wire blade	SUS304
②	Flange	SUS304	⑤	Corrugation hose	Fluorine resin
③	Ferrule	SUS304	⑥	Back up gasket	Joint sheet

Flange compatible dimension	Standard	JIS10K	
	Flange standard can be changed to	×	JIS5K
		×	PN16
		×	JIS20K
		×	ANSI
Material	Standard	SUS304	
	Flange material can be changed to	×	SS400
		×	FCD450
		×	SUS316
		×	PVC

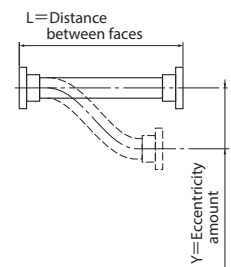
Dimensions and Allowable Movements

Nominal Dia.		Dimension [mm]				JIS10K flange				Minimum curvature radius (mm)
mm	inch	φd	φG	t	φE	φD	φC	T	n-φH	
15	1/2	16	40	0.9	23	95	70	12	4-15	50
20	3/4	20	52	1.0	29	100	75	14	4-15	70
25	1	25	60	1.1	35	125	90	14	4-19	90
32	1 1/4	32	70	1.2	43	135	100	16	4-19	110
40	1 1/2	37	80	1.5	50	140	105	16	4-19	130
50	2	50	90	1.5	63	155	120	16	4-19	175
65	2 1/2	63	110	1.6	84	175	140	18	4-19	200
80	3	74	120	1.6	94	185	150	18	8-19	205
100	4	97	145	1.8	123	210	175	18	8-19	230

※ a maximum 5000L of face-to-face dimension is available.
 ※ Referring to "fixing bolt dimension table", and use fixing bolt.
 (When companion flange is JIS 10K, material is SS400, and when plain washer and gasket are not used.)

Eccentricity amount by face-to-face dimension

Nominal Dia.		Distance between faces (L)									
mm	inch	150	200	300	400	500	600	700	800	900	1000
15	1/2	10	15	30	45	60	75	85	100	115	130
20	3/4	10	15	25	40	50	65	75	90	110	110
25	1	4	10	20	35	45	55	70	80	95	105
32	1 1/4	-	10	20	30	40	55	65	75	90	100
40	1 1/2	-	9	20	30	40	55	65	75	90	100
50	2	-	8	15	30	40	50	60	75	85	95
65	2 1/2	-	-	15	25	35	45	60	70	80	90
80	3	-	-	15	25	35	45	60	70	80	90
100	4	-	-	10	20	30	40	50	60	70	75



※as for eccentricity amount by face-to-face dimensions which are not listed in the table, contact us.

This brochure may be revised without prior notice. We apologize in advance for any inconvenience this may cause.

Agent

TOZEN Corporation
 8-4, Asahi, Yoshikawa
 Saitama 342-0008 Japan

